

How to supply your Artwork

This standard for supplying electronic files for digital printing has been created by Invisage to ensure optimum quality is achieved from customer supplied electronic files. Artwork must be received as per these guidelines.

Media

All electronic artwork can be sent to us via www.yousendit.com or can be supplied on DVD, CD Rom or via e-mail to info@invisage.net All media will be retained by Invisage for future use. Please limit any email to 5Mb

Electronic Transfer

Files can be uploaded to us via www.yousendit.com Simply visit this website and follow the on-screen instructions. An automatic confirmation email will be sent to you advising that the file has been sent.

Fonts

All fonts converted to outlines. Embedded fonts may not work and may result in font incompatibility.

Acceptable Formats - offset printing

All images CMYK, 100% at 300dpi
Illustrator CS2 EPS - CMYK or Grayscale
PDF - High Res CMYK or Grayscale
TIFF - 300dpi CMYK or Grayscale
JPG (JPEG) - 300dpi CMYK or Grayscale (no compression)
(Compression rate will effect print quality)

Invisage cannot guarantee the quality of office based file formats.
(ie: Word, Publisher, Powerpoint, Pagemaker etc)
Artwork supplied from QuarkXpress and Pagemaker will be rejected unless converted to formats above.

Bleed and Trim

Artwork should include a 5mm bleed with text to be at least 4mm from the border. Sizes shown do not include bleed.

Design service

Invisage is happy to provide you with creative advice and to design your art for you. Please call us on 03 9395 3788 for a free quotation.

Where artwork is supplied electronically by the customer Invisage will not accept responsibility for errors or omissions or for the quality of reproduction. Proofs will not be provided unless requested, charges do apply.

We look forward to providing you with your next creative solution.

Supply of artwork for Large format printing

Usually files are best scaled at 1:10 for easy handling, (although other scaling factors are acceptable). Files should generally be less than 250 Megabytes but greater than 50MB. It is better to provide as high a resolution as practical.

The artwork dimensions should be calculated from the following table. Images should then be placed into the document at 300dpi minimum. We understand this is not always possible due to original image resolutions, just do the best you can and we will advise if the images will not reproduce well. Images should not be less than 130dpi

Print Area	Ratio	Percentage
<2m2	1	100
2 – 10m2	1:2	50
10 – 20m2	1:4	25
20 – 30m2	1:10	10
> 30m2	1:20	5

Notes on Colour

Pantone colours are used as guides. Although they cannot always be matched perfectly, they will be matched as closely as possible.

Due to the inconsistent nature of colour inkjet and laser prints, we do not consider them to be an accurate colour representation. Some proofing systems produce colours that are outside the gamut of colour inkjet machines are able to achieve.

invisage creative services
info@invisage.net

5 helpmann avenue
point cook, victoria 3030
t: +61 3 9395 3788
f: +61 3 9395 3788

www.invisage.net
www.ausfolio.com.au

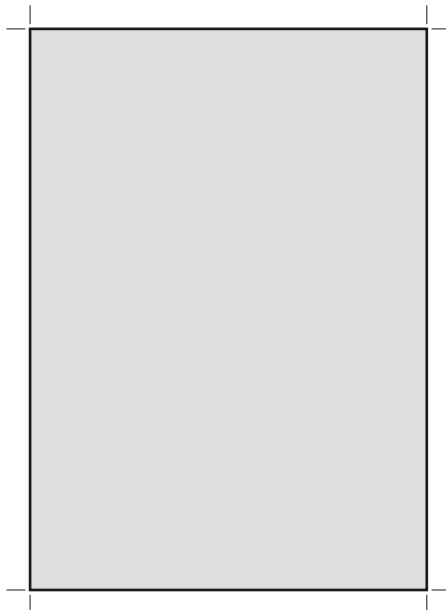
How to Supply Your Artwork

Detailed below are standard sizes for press ready A4 publication artwork.

invisage creative services
info@invisage.net

5 helpmann avenue
point cook, victoria 3030
t: +61 3 9395 3788
f: +61 3 9395 3788

www.invisage.net
www.ausfolio.com.au



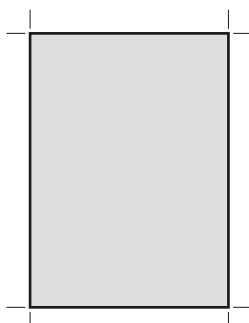
Full page ad – A4
210 x 297mm high
+ 5mm bleed



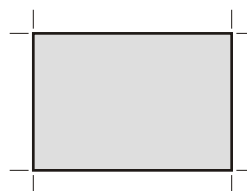
Half page ad
210 x 148.5mm high
+ 5mm bleed



DL or 1/3 page ad
210 x 99mm high
+ 5mm bleed



quarter page ad
105 x 148.5mm high
+ 5mm bleed



1/8 page ad
105 x 74.25mm high
+ 5mm bleed

GRAPHIC DESIGN
brand development
promotional collateral
advertising collateral
signs and graphics
web hosting and design

DISPLAY DESIGN
exhibition design
custom displays
retail design
portable displays
3D visualisations
animations

PROJECT SERVICES
project & print management
photography & stock images
fabrication & installation
dismantle & storage

abn 94 125 609 021